

# 802.11n Wireless ADSL 2/2+ Router



The PLANET ADN-4101 is a Wireless ADSL 2/2+ Router compliant with 802.11n and features 1T1R MIMO antenna technology. The ADN-4101 is the ideal solution for office and residential users to share a high-speed ADSL 2/2+ broadband Internet connection and four-10/100Mbps Fast Ethernet backbone. It can support transmission rates up to 24Mbps downstream and 3.5Mbps upstream with ADSL 2+ support. The ADN-4101 supports PPPoA (RFC 2364 - PPP over ATM Adaptation Layer 5), RFC 2684 encapsulation over ATM (bridged or routed), PPP over Ethernet (RFC 2516), and IPoA (RFC1483) to establish a connection with ISP.

With built-in IEEE 802.11b/g and 802.11n wireless network capabilities, the ADN-4101 allows any computer and wireless-enabled network device connecting to it without additional cabling. With an 802.11n compatible wireless card installed in your PC, any file can be transferred in the highest speed up to 150Mbps. The radio coverage is also doubled than before, which offers the high speed wireless connection even in a wide space at your office or house.

To secure the wireless communication, the ADN-4101 features the most up-to-date encryption, WEP, WPA-PSK and WPA2-PSK. The ADN-4101 also supports WPS configuration with PBC/PIN type for users easily connect to a secured wireless network with no need of complicated settings.

The ADN-4101 has user-friendly management interfaces so it can be managed by workstations running standard web browsers. It provides DHCP server, NAT, Virtual Server, DMZ, Access Control, IP Filter, DDNS, and UPnP capability. The ADN-4101 also serves as an Internet firewall to protect your network from being accessed by unauthorized users. It offers the natural firewall function. All the incoming and outgoing IPs can be monitored and filtered. For the advanced application, it even can block internal users accessing to the Internet services.

## KEY FEATURES

### INTERNET ACCESS FEATURES

- **Shared Internet Access**  
All users in the LAN can access the Internet through the ADN-4101 by just a single external IP Address. The local (invalid) IP Addresses are hidden from external sources. This process is called NAT (Network Address Translation).
- **Built-in ADSL 2/2+ Modem**  
The ADN-4101 provides ADSL 2/2+ modem service and supports all common ADSL connections.
- **PPPoE, PPPoA, Direct Connection Support**  
Various WAN connections are supported by the ADN-4101.
- **Fixed or Dynamic IP Address**  
On the Internet (WAN port) connection, the ADN-4101 supports both Dynamic IP Address (IP Address is allocated on connection) and Fixed IP Address.

### ADVANCED INTERNET FUNCTIONS

- **Virtual Servers**  
This feature allows Internet users to access Internet servers on your LAN. The required setup is quick and easy.
- **DMZ Support**  
The ADN-4100 can translate public IP addresses to private IP address to allow unrestricted 2-Way communication with Servers or individual users on the Internet. This provides the most flexibility to run programs, which could be incompatible in NAT environment.
- **Firewall**  
AND-4100 supports simple firewall with NAT technology and provides options for accessing control from Internet like Telnet, FTP, TFTP, HTTP, and ICMP services. It also supports IP/MAC / Application/URL filtering.
- **Universal Plug and Play (UPnP)**  
UPnP allows automatically discovering and configuration of the Broadband Router. UPnP is supported by Windows ME, XP, or later.
- **Dynamic DNS Support**  
The ADN-4101 can translate public IP addresses to private IP address and allow unrestricted 2-Way communication with Servers or individual users on the Internet. This provides the most flexibility to run programs which could be incompatible in NAT environment.
- **Firewall**  
The ADN-4101 supports simple firewall with NAT technology and provides options for access control from Internet like Telnet, FTP, TFTP, HTTP, SNMP, and ICMP services. It also supports IP/ MAC/ Application/ URL filtering.
- **Universal Plug and Play (UPnP)**  
UPnP allows automatically discovering and configuration of the Broadband Router. UPnP is supported by Windows ME, XP, or later.

**Dynamic DNS Support**

Base on the Virtual Servers feature, the ADN-4101 allows users connecting a server to the LAN by using a Domain Name even if you have a dynamic IP address.

**RIP Routing**

It supports RIPv1/2 routing protocol for routing capability.

**Simple Network Management Protocol (SNMP)**

It is an easy way to remotely manage the router via SNMP.

**LAN FEATURES**

**4-Port Switch**

The ADN-4101 incorporates a 4-Port 10/100BaseT switching hub, making it easy to create or extend your LAN.

**DHCP Server Support**

Dynamic Host Configuration Protocol provides a dynamic IP address to PCs and other devices upon request. The ADN-4101 can act as a DHCP Server for devices on your local LAN and WLAN.

**IPv6**

ADN-4101 implements the new IP version for further compatibility of network environment.

**WIRELESS FEATURES**

**Supports IEEE 802.11b, g and 802.11n Wireless Standard**

The 802.11n standard provides backward compatibility with the 802.11b and 802.11g standard, so 802.11b, 802.11g, and 802.11n compliant devices can be used simultaneously.

**802.11n Technology**

The ADN-4101 complies with IEEE 802.11n wireless technology standard and provides data rate up to 150Mbps. It provides farther coverage, less dead spaces and higher throughput with 1T1R MIMO technology.

**WEP Support**

WEP (Wired Equivalent Privacy) is included. Key sizes of 64 Bit and 128 Bit are supported.

**WPS Push Button Control**

The ADN-4101 supports WPS (Wi-Fi Protected Setup) for users to easily connect to wireless network without configuring the security.

**WPA-PSK Support**

WPA-PSK\_TKIP and WAP-PSK\_AES encryption are supported.

**Wireless MAC Access Control**

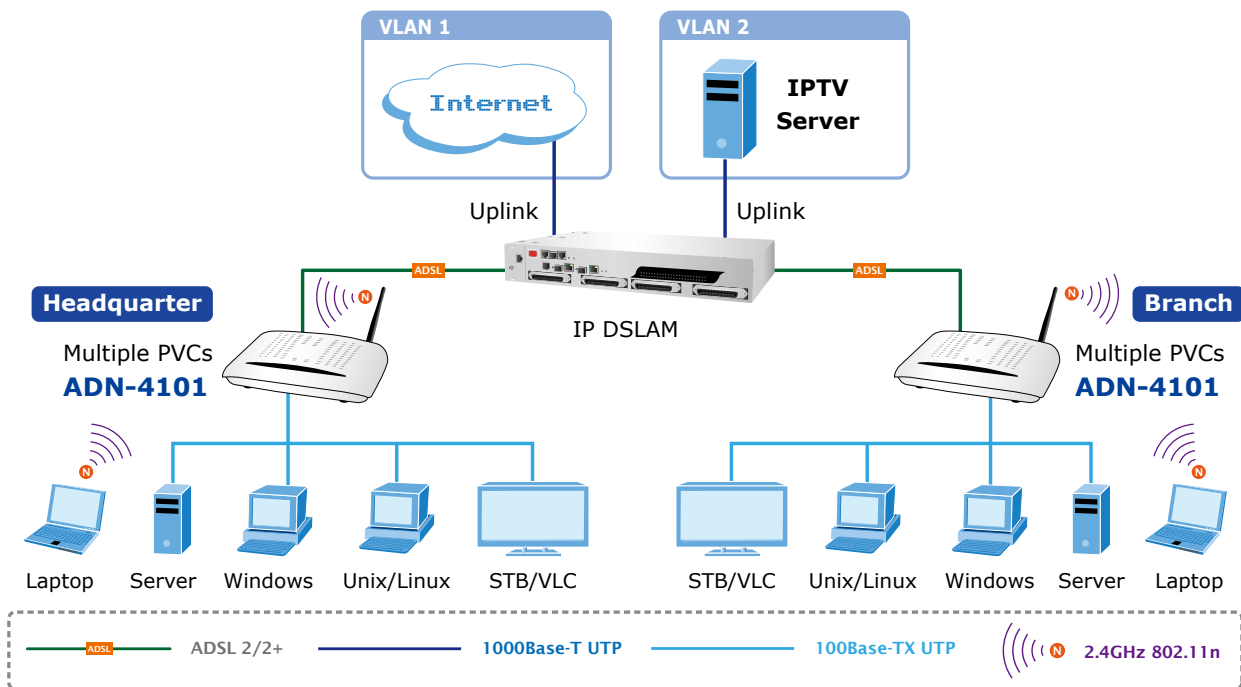
The Wireless Access Control feature can check the MAC address (hardware address) of Wireless stations to ensure that only trusted Wireless Stations can access your LAN.

**APPLICATIONS**

**Internet Connection with Wired/Wireless**

The ADN-4101 is a perfect solution for a small group of PCs connecting to a high-speed broadband Internet connection. Multi-users can access to the Internet simultaneously. With built-in 802.11n capability, the ADN-4101 enables the mobile users to access Internet by up to 150Mbps high speed.

The ADN-4101 also incorporates a 4-Port 10/100Base-TX switching hub, which makes it easy to create or extend your LAN and prevent the attacks from the internet.



**SPECIFICATION**

<b>Product</b>		<b>802.11n Wireless ADSL 2/2+ Router</b>
<b>Model</b>		<b>ADN-4101</b>
<b>Hardware Specification</b>		
<b>Standard</b>		Compliant with ADSL Standard - Full-rate ANSI T1.413 Issue 2 - G.dmt (ITU G.992.1) - G.lite (ITU G.992.2) - G.hs, Multimode (ITU G.994.1) Capable of ADSL2 Standard - G.dmt.bis (ITU G.992.3) Capable of ADSL2+ Standard - G.dmt.bisplus (ITU G.992.5) - Reach Extended ADSL (RE ADSL) - Supports Annex A, B*, M, L
<b>Protocol</b>		RFC 2364 - PPP over ATM (LLC/VCMUX) RFC 2516 - PPP over Ethernet (LLC/VCMUX) RFC 1483 - Classic IP over ATM (LLC/VCMUX) RFC 2684 - Bridged IP over ATM (LLC/VCMUX) RFC 2684 - Routed IP over ATM (LLC/VCMUX)
<b>AAL and ATM Support</b>		Supports up to 8 PVCs ATM Forum UNI 3.1/4.0 PVC VC and LLC Multiplexing Integrated ATM AAL5 support(UBR,CBR,VBR-rt, and VBR-nrt) 0~255 VPI plus 1~65535 VCI address range OAM F4 & F5 Segment end-to-end loop-back, AIS, and RDI OAM cells
<b>Ports</b>	<b>LAN</b>	4 x Ethernet (10/100Mbps, Auto-Negotiation, Auto MDI/MDI-X)
	<b>WLAN</b>	1 x 802.11b/g/n Access Point with one 2dBi dipole antennas
	<b>WAN</b>	1 x RJ-11
<b>LED Indicators</b>		PWR, Link, Data, LAN 1~4, WLAN, WPS
<b>Button</b>		WLAN, Reset, WPS, Power
<b>Max. Concurrent Sessions</b>		2048
<b>Wireless Standard</b>		IEEE 802.11b, 802.11g and 802.11n
<b>Wireless Frequency</b>		2.4 to 2.4835GHz (Industrial Scientific Medical Band )
<b>Wireless Channels</b>		Maximum 14 Channels, depending on regulatory authorities
<b>Wireless Data Encryption</b>		64 bit / 128 bit WEP, WPA-PSK / WPA2-PSK, and WPS PBC
<b>Wireless Data Rate</b>		Maximum up to 150 Mbps <b>IEEE 802.11b</b> 1 / 2 / 5.5 / 11Mbps <b>IEEE 802.11g</b> 6 / 9 / 12 / 18 / 24 / 36 / 48 / 54Mbps <b>IEEE 802.11n 20MHz</b> 14 / 29 / 43 / 58 / 87 / 116 / 130 / 144Mbps <b>IEEE 802.11n 40MHz</b> 30 / 60 / 90 / 120 / 150Mbps
<b>Software</b>		
<b>Protocols/Features</b>		NAT supports PAT and multimedia applications NAT, Static Routing, and RIPv1/2 Transparent Bridging Dynamic Domain Name System (DDNS) SNTP DNS relay and IGMP proxy DMZ and Virtual Server Quality of Service (QoS) for Traffic Prioritization TR-069 Ready UPnP

\*Remark: Model upon request

<b>Security</b>	PPP over PAP (Password Authentication Protocol, RFC1334) PPP over CHAP (Challenge Authentication Protocol, RFC1994) DoS Protection Access Control ACL (Access Control) IP/ MAC/ Application/ URL Filter Stateful Packet Inspection (SPI) Firewall Password protection for system management
<b>Management</b>	Web-Based configuration Embedded Telnet server for remote and local management Firmware upgraded and configuration data upload/download via WEB SNMP v1/v2 MIB supported Supports DHCP Server/Client/Relay Built-in Diagnostic tool and IP Ping TR-069
<b>Environment Specifications</b>	
<b>Dimension (W x D x H)</b>	176 x 124 x 35 mm
<b>Power</b>	12V DC, 1A
<b>Operating Environment</b>	Operating temperature: 0 ~ 50 Degree C Storage temperature: -10 ~ 70 Degree C Humidity: 10 ~ 95% non-condensing
<b>Emission</b>	FCC, CE

## ORDERING INFORMATION

<b>ADN-4101A</b>	802.11n Wireless ADSL 2/2+ Router, AnnexA
------------------	---